

- print
- copy
- scan
- fax

WORKGROUP COPYING

KM-2530/KM-3530/KM-4030

Performance and speed for all your copying, printing, faxing and scanning.

Whether you require a fast, reliable stand-alone digital copier or a departmental imaging centre with advanced functionality, Kyocera Mita's range of workgroup copiers deliver with ease.

With their fast copy speeds and the added options of printing, scanning and faxing, these products combine advanced digital functionality, unbeatable reliability and high-speed productivity, plus excellent value for money.

A variety of interchangeable finishers help you present documents to your exact requirement. Add the optional print/scan system and they become powerful networked departmental MFPs, capable of sending a scanned document across your network or anywhere in the world.



KM-2530

Entry-level workgroup A3 digital copier/MFP



KM-3530

Reliable, high-volume copier/MFP



KM-4030

Affordable, high-speed workhorse copier/MFP



Do it **your** way

Choose your options to design a multi-functional copier to meet your needs – now and for the future.

WORKGROUP COPYING

Performance and speed

Increased efficiency

Do you ever find there aren't enough hours in the day? Or your copier just won't keep up with your demands? The Kyocera Mita range of workgroup copiers have a new Triple Access function enabling you to dramatically increase your job efficiency. Now you can print or copy at the same time as the fax memory is sending or receiving faxes!

Key Features

- 25ppm A4 and 15ppm A3 engine speed (KM-2530)
- 35ppm A4 and 19ppm A3 engine speed (KM-3530)
- 40ppm A4 and 19ppm A3 engine speed (KM-4030)
- Access your documents quickly with the first copy speed of less than 3.9 seconds
- 600dpi resolution enhanced to 1200dpi with Kyocera Image Refinement KIR2
- 2 x 500 sheet paper feeders and 200 sheet multi-purpose feeder as standard
- Max. input of 4,200 sheets with the additional 3,000-sheet paper feeder
- Save time and money by sending faxes direct from your PC with the optional network fax solution
- Make your copier-printer available to a workgroup by installing the optional print, or print/scan systems, both come with 10/100BaseTX networking
- Optional internal duplex unit provides fast, reliable double-sided output
- Long-life drum guaranteed up to 400,000 (KM-2530) or 500,000 pages (KM-3530 and KM-4030)



• Advanced and modular options

Customise your digital copier to suit your exact needs. From basic network connectivity up to advanced printing, scanning and faxing functionality they are amongst the most advanced one stop solutions on the market.

If you require high volume throughput simply add the optional 3,000 sheet paper tray to boost your paper capacity to its maximum of 4,200 sheets. Add the internal duplex unit and you have double-sided printing from this space-saving design. Plus, an enviable range of optional finishers ensure professional document presentation.

Simply choose the options to suit your needs.

- **Enhanced document output**

To further enhance your productivity, the extensive range of finishers allow you to sort, collate, send to a mailbox, staple, hole-punch or even fold and booklet stitch your documents for that added professional touch.

- **Internal finisher**

Install the space-saving internal finisher (DF-78) to allow offset sorting and stapling for up to 30 sheets per set. Let this optional finisher do the work for you, making set distribution easy.

- **High capacity finisher**

Use the 3,250 sheet document finisher (DF-71) to sort and staple or hole punch your documents. This high capacity document finisher allows for high volume printing at full speed, without the need to frequently empty the output tray.

- **Booklet finisher**

The Booklet finisher (DF-75) enables you to produce high-quality professional material with ease. Incorporating sorting, stapling, folding and saddle-stitching with the added option of hole punching, it provides everything you need to create that professional image.

- **Sorter/mailbox**

The 7-bin mailbox is ideal for large groups using network printing. Each mailbox can be assigned to an individual or department, allowing for easy document retrieval and saving you time.

- **Reverse unit**

The optional reverse unit (RA-1), for use with the DF-75 booklet finisher, allows fast face-down output, delivers your documents in the correct order and at 100% engine speed.



Shown with booklet finisher (DF-75)



Shown with high capacity finisher (DF-71)

Exceeds expectations

The advanced image processing accurately reproduces text, photographs and illustrations in the finest detail, using no less than 256 halftones. All three digital copiers have 32MB of standard memory enabling up to 205 pages to be scanned*. If your requirement is for high-volume use, the memory can be expanded to 160MB allowing an incredible 1,020 pages to be stored for output, whether processing one job or several.

* Based upon 5% coverage (A4).

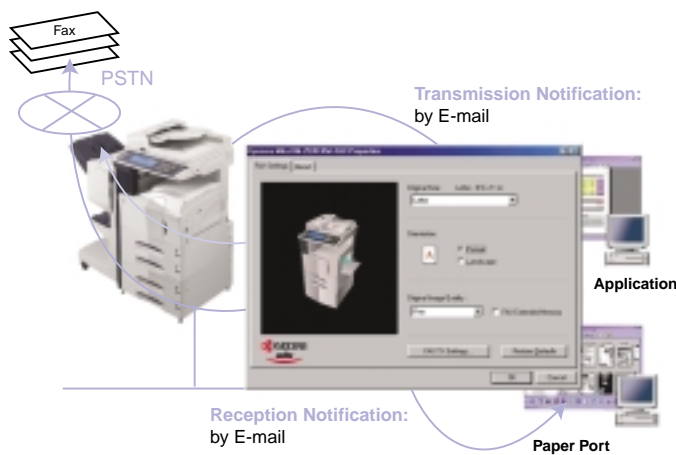


Shown with high capacity finisher (DF-71) and sorter/mailbox (M-2107)

Enhanced functionality



Professional network fax functionality



- **Direct Fax Transmission:**

Documents produced on the PC can be transmitted directly from the PC by fax. Fax delivery confirmation is relayed back to the sender via e-mail. There is no need to print out the document before faxing.

- **Direct Fax Reception:**

Received faxes are not automatically printed out, but can be saved on a designated computer and delivered to public or private folders in PDF or TIFF format. Notification of fax reception can be made via email to the recipient.

- **Easy administration**

KM-Net viewer is an advanced network management utility that makes it possible to constantly monitor the status of every Kyocera Mita copier and printer on the network. You also have the capability to monitor SNMP-compliant printer products from other vendors.

Connected printers and copiers can be checked for paper and toner levels from your PC, making for efficient ordering and stocking. Settings, controls and operation of the print function can be centrally managed and even pop-up emails can be sent to the dedicated network manager if a problem arises, saving you expensive downtime and increasing productivity.

- **Easy to use**

The advanced wide-screen touch panel is easy to use and designed to save you both time and hassle for copying, printing, faxing and scanning your documents.



Explanations of each function are displayed on the panel, so there is no need to refer to the manual. The panel can even be customised to meet your precise needs. For instance, one-touch and short-cut keys can be selected and displayed for frequently used functions.

- **The ecological choice**

With long-life drum technology built-in, the workgroup copier range benefit from reliable operation, ultra-low costs as well as reduced waste and minimised environmental impact. The high yield toner cassettes cost less and last up to twice as long as competitive products, saving you both time and money. Add to this the ECOPrint mode enabling you to print with reduced toner consumption and your toner lasts even longer, reducing environmental impact and saving money.



Need more information? Visit: www.kyoceramita.co.uk

PRINTER RANGE

• Have you seen our printer range?

For greater flexibility, the KM-2530, KM-3530 and KM-4030 have been developed in parallel with the FS-9100DN and FS-9500DN departmental printers so that you benefit from a suite of single- and multi-functional document devices that are fully compatible with each other, sharing drivers and paper handling options. Our entire printer range utilises this same driver technology, ensuring consistent document imaging from any device on the network, with minimum fuss.

departmental printers

36ppm A4 or
19ppm A3 laser printer



FS-9100DN

- Network ready and duplex as standard
- 4,200 sheet max input capacity
- 350MHz PowerPC processor

50ppm A4 or
26ppm A3 laser printer



FS-9500DN

- Network ready and duplex as standard
- 4,200 sheet max input capacity
- 400MHz PowerPC processor



STEP UP

workgroup printers

18ppm A4
laser printer



FS-1800+/1900

- 600-sheet input from 2 sources
- Ultra-fast 200MHz PowerPC processor
- 2,100 sheet max input from 5 sources

24ppm A4
laser printer



FS-3800

- 600-sheet input from 2 sources
- Ultra-fast 200MHz PowerPC processor
- 2,100 sheet max input from 5 sources

20ppm A4 or 11ppm
A3 laser printer



FS-6700

- 250-sheet paper feeder and 100-sheet as standard
- Up to 2 additional paper feeders, 1,350 sheet max input capacity
- 100MHz PowerPC processor



STEP UP



STEP UP



To find out more visit: www.kyoceramita.co.uk/products

Workgroup Copying

KM-2530/KM-3530/KM-4030

General

Technology	Laser / Mono component
Type	Desktop
Engine speed	25/15ppm A4/A3 (KM-2530) 35/19ppm A4/A3 (KM-3530) 40/19ppm A4/A3 (KM-4030)
Resolution	600 x 600 dpi, 256 greyscales (scan/copy) Fast 1200 dpi (1800 x 600 dpi) 2400 x 600 dpi with KIR2 (print) A3 (print/copy/scan/fax)
Maximum paper size	60 seconds or less
Warm-up time	Max. 85,000 pages in a month (KM-2530) Max. 120,000 pages in a month (KM-3530) Max. 140,000 pages in a month (KM-4030)
Duty cycle	Copying: 614 W Stand-by: 147 W Sleeping: 51 W
Power consumption	Copying: 60 dB. Stand-by: 35 dB
Noise	AC 220 - 240 V, 50/60 Hz
Power source	585 x 646 x 745 mm
Dimensions (W x D x H)	Approx. 79 kg
Weight	

Paper Handling

Paper capacity	500-sheet x 2 universal cassette (60-105 gm ² , A5R-3, Folio) 200-sheet multi-bypass (45-200 gm ² , A6R A3, Folio, Envelopes) Max. 4,200 sheets
Output capacity	250-sheet face-down inner tray

Copy Functions

First copy time	3.9 seconds or less
Continuous copy	1-999 sets
Memory capacity	Standard 32MB Max. 160MB, 1 additional DIMM Slot (32, 64, 128MB) 25% - 400% in 1% steps
Zoom	21 Reduction, 9 Enlargement
Magnification ratios	Energy save mode, interrupt copy, scan once copy many, electronic sort, rotate sort, rotate copy, N-up copy, filing copy, split copy, cover mode, page numbering, image overlay, margin shift, border erase, positive/negative, mirror, duplex, booklet copy, program (8), department code (500).
Features	* AD-63 required

Print Functions (Optional)

Processor	PowerPC 750CX 350MHz
Memory	Standard 32MB + ECOMemory Max. 288MB, 2 additional DIMM slots (16, 32, 64, 128 MB)
Emulations	PCL6 incl. P.J.L., KPDL3 (PostScript3 compatible), Line Printer, IBM Proprinter X24E, Epson LQ-850, Diablo 630, KC-GL PRESCRIBE IIe
Controller language	80 outline fonts (PCL6) 1 Bitmap font, 136 outline fonts (KPDL3), 45 types of one dimensional barcodes, 1 type of two-dimensional barcode (PDF-417)
Fonts	Standard IEEE 1284, RS-232C Standard 10Base-T/100Base-TX 2 KUIO-LV slots
Interface	MIC allows for simultaneous data transfer via up to five interfaces, with each interface having its own virtual printer
Multiple Interface Connection (MIC)	

Scan Functions (Optional)

Functionality	Scan-to-PC, scan-to-email, network TWAIN
Scan speed	25/35 originals per minute (600 dpi/A4) (KM-2530/KM-3530)
Original type	Text, photo, text + photo, OCR
Resolution	600, 400, 300, 200 dpi (256 greyscales)
Applicable PC	IBM PC/AT compatible
Applicable OS	Windows 95, 98, Me, NT 4.0, 2000
Interface	10Base-T, 100Base-TX
Compression method	G4 (MMR)
File types	TIFF, PDF
Network protocol	TCP/IP
Bundled software	Scanner File Utility, Address Book, Address Editor, TWAIN source, PaperPort Deluxe

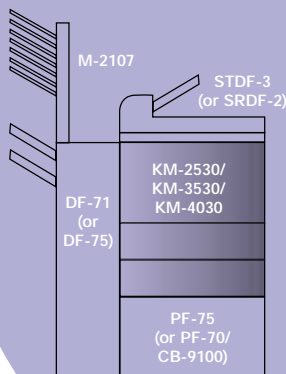
Fax Functions (Optional)*

Compatibility	ITU-T Super G3
Modem speed	Max. 33.6 kbps
Transmission speed	3 seconds or less with JBIG

Mix and match

your options to suit your needs

Part numbers for ordering



STDF-3	Automatic document feeder
SRDF-2	Reversing document feeder
PF-70	500-sheet x 2 paper feeders
PF-75	3,000-sheet A4 paper feeder
DF-71	3,250-sheet sorter/collator
DF-75	1,000-sheet stacker/booklet finisher
RA-1	Reverse unit for DF-75
AK-70C	Attachment kit for DF-71/DF-75
PH-2B	2-hole punch unit for DF-75
PH-2C	4-hole punch unit for DF-75
CB-9100	Cabinet for paper and toner stocks
AD-63	Automatic duplex unit
M-2107	7-bin mailbox finisher for DF-71
J-1402	Job separator

For further options and configurations visit:

www.kyoceramita.co.uk/products

Scanning speed	1 second
Scanning density	Normal: 8 dot/mm x 3.85 line/mm Fine: 8 dot/mm x 7.7 line/mm Superfine: 8 dot/mm x 15.4 line/mm Ultrafine: 16 dot/mm x 15.4 line/mm (with optional memory)
Compression method	JBIG, MMR, MR, MH
Memory	Std. 4MB Bitmap (Max. 8 MB)
Features	Network faxing (requires Print/Scan-2530), duplex Rx and Tx (requires AD-63), rotate Rx and Tx, delayed Tx, polling, confidential Rx and Tx, A3 Rx and Tx, mailbox, remote diagnostics, relay and bulletin board

* Document feeder required

Options

PCO-TYPEB	Platen cover
STDF-3	Automatic document feeder (KM-2530 only)
SRDF-2	Reversing automatic document feeder
PF-70	Paper feeder (500-sheet x 2 universal)
PF-75	High-capacity A4 paper feeder (3,000-sheet)
AD-63	Automatic duplex unit
DF-71	3,250-sheet sorter/collator stapler with 4-hole punching facility (requires AK-70C)
DF-75	1,000-sheet stacker/booklet finisher (requires AK-70C)
PH-2B	2-hole punch unit for DF-75
PH-2C	4-hole punch unit for DF-75
RA-1	Reverse unit for DF-75
AK-70C	Attachment kit for DF-71/DF-75 finishers
DF-78	Internal finisher (500-sheet)
M-2107	7-bin mailbox finisher for DF-71
J-1402	Job separator
Print-2530	Printing system
Print/scan-2530	Printing and scanning system
BC-1**	Barcode reader
HD-4**	6GB Hard disk
CF-32	32MB Compact Flash card
DIMM-xxMB	16**, 32, 64, 128 MB (DIMM) copier and print/print & scan systems memory
Fax-F	Network fax system
MM-8Fax	8MB fax memory
CB-9100	Cabinet for paper and toner stocks
** Only for use with print and print/scan system	
Internal multi-protocol network interfaces for use with print and print/scan systems	
SB-110	10/100BaseTX Ethernet interface (as standard)
SB-60	4/16Mbit Token ring (STP/UTP) interface
SB-110FX	100BaseFX Fibre Optic interface
SB-50	10BaseFL Fibre Optic interface
HB-7/110	10/100BaseTX Ethernet interface (includes DEC-LAT protocol)



Need to know more? Visit: www.kyoceramita.co.uk

Businesses nowadays want it all: productivity-enhancing innovation, workhorse reliability and digital functionality. With the joint development and merging of technologies between Kyocera Corporation and Kyocera Mita, we are able to develop innovative products that will satisfy your needs more efficiently than ever before.